

MAURICE ASHLEY PRESENTS

PAWN MOWER



THE ADDICTIVE NEW PUZZLE
ANYONE CAN DO!

Or order online at
www.pawnmower.com

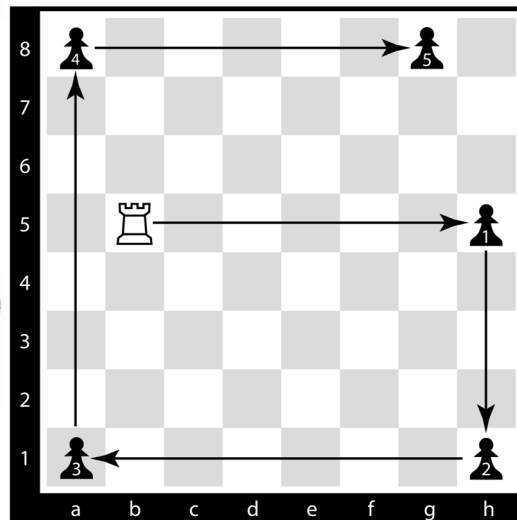
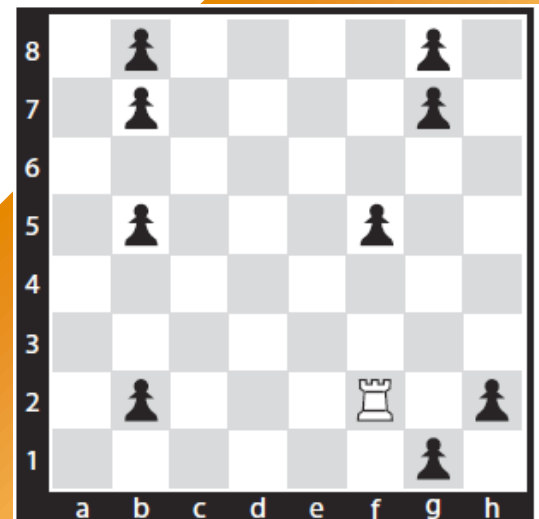
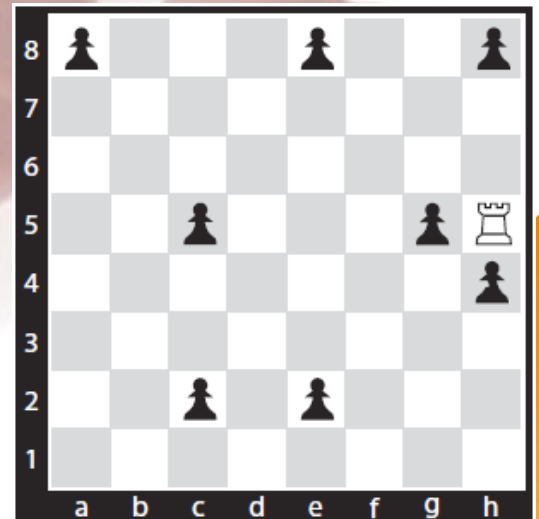
INAUGURAL RELEASE

New puzzles quarterly...
Bulk rates available.



TRY IT NOW!

Use the rook to eliminate all the pawns on the board. Pawns are captured by moving to the square they are standing on. The number of moves in the solutions depends entirely on the number of pawns to be removed (5 pawns will require 5 moves). You cannot move to an empty square.



Solution:

Remember, a rook moves vertically and horizontally. It can get rid of all five pawns by moving right, then down, then left, and then right. An efficient way to describe this is to say that the rook moves to h5 to h1 to a8 to g8. Five pawns, five moves.

For Kids, K-8. All Levels Welcome.

World-class chess training using renowned Grandmaster Maurice Ashley's revolutionary teaching method. Campers will learn from the Grandmaster, as well as from coaches who have been specially trained in his techniques.



RICHMOND, VA

Mon-Fri, July 27-31

SCHENECTADY, NY*

Mon-Fri, July ?????

**Presented by Proctors, a licensee of MATCH/Ashley-Parr*

CHARLOTTE, NC

Mon-Fri, August 10-14

**CHECK OUR WEBSITE FOR INFORMATION ABOUT
CAMPS IN OTHER CITIES OR TO FIND OUT ABOUT
HOSTING A CAMP IN YOUR AREA**

Maurice Ashley Trains Champions (MATCH) is a collaborative effort between GM Maurice Ashley and Dr. Teresa Parr. MATCH programs and products are based GM Ashley's unique method for developing visualization skills, focus, concentration and coolness under pressure augmented by Dr. Parr's expertise in psychology and education. Students trained by GM Ashley have gone on to win National Championship team and individual titles, as well as becoming successful in a variety of careers.



**SUMMER
2009**

Learn more at
www.mauriceashleychampions.com